



HEAVY DUTY EDGE GUARDS

STAINLESS STEEL



**IDCA528 Edge Guard
with 1 Lip Only**



**IDCA538C
Full Edge Guard**



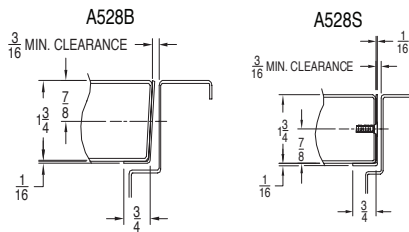
**IDCA548T Full Edge Guard
With Astragal**

DOOR EDGE GUARDS

- Standard lengths 78-3/4", 83-1/8", 85", 96", 118-3/4"
- Special lengths available
- For bevel edge door (Suffix B) or square edge door (Suffix S)
- For 1-3/4" door
- Material 16 Gauge, 304 Stainless Steel
- For high traffic, high abuse doors
- Standard cutouts available
- Custom Cut-outs available as required
- Non-handed (except with cutouts)

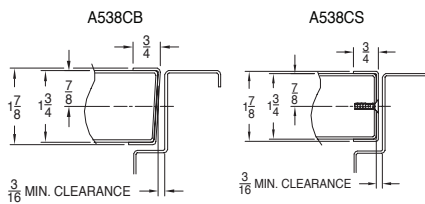
IDCA528 EDGE GUARD

- 3/4" door edge lip, one side
- Bevel and square edge available



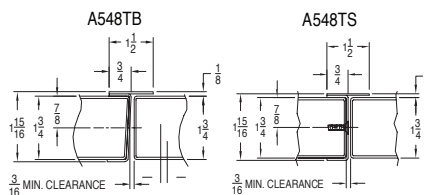
IDCA538C EDGE GUARD

- 3/4" door edge lip, both sides
- Bevel and square edge available

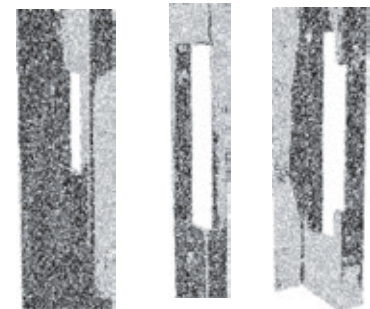


IDCA548T EDGE GUARD WITH ASTRAGAL

- 3/4" door edge lip, both sides with astragal one side
- Bevel and square edge available



STANDARD CUTOUTS



161 Latch 86 Mortise 4-7/8" ASA Strike

- Other cutouts or order forms available online (www.intldoorclosers.com) or contact factory