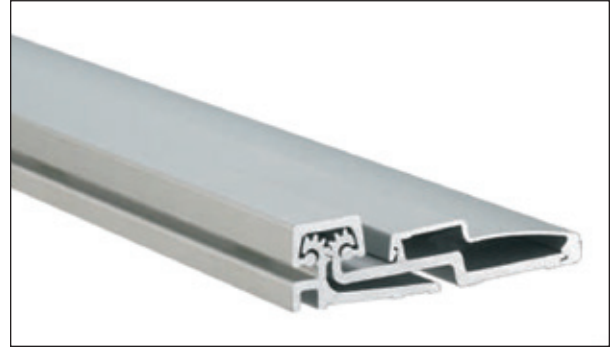




HEAVY DUTY

CONTINUOUS HINGES

ALUMINUM HALF SURFACE GEARED HINGES



HALF SURFACE HINGES

- Any Door Material
- Heavy Duty for high frequency 1 3/4" doors or heavy medium frequency doors up to 450lbs.
- 617HS (Heavy Duty)

MODEL		LENGTH		SCREW COUNT		CLEARANCE
C (Clear Anodized)	D (Duro Anodized)	IN	CM	DOOR	JAMB	
617HSC-83	617HSD-83	83	210.8	19	19	5/16" (8mm) hinge side plus standard lockside clearance
617HSC-95	617HSD-95	95	241.3	20	20	
617HSC-120	617HSD-120	120	304.8	26	26	

*Note: First 3 numbers = (Product #), FS = (Half Surface), C or D = (Finish), 83, 95 & 120 = (Length)

FASTENERS: (Self-Tapping Screws)	FRAME PORTION <ul style="list-style-type: none"> • All fasteners as No. 12-24 x 1/16" Type C, FHUC - Heavy Duty Hinges - 10 required for each leaf DOOR PORTION <ul style="list-style-type: none"> • Thurbolt 1/4-20 x 1 5/8" PCH - Heavy Duty Hinges - 6 required for each leaf • Shoulder bolt 1/4 - 20 x 1" PCH - Heavy Duty Hinges - 6 required • Pan Head Self Drilling No. 12 x 3/4" - Heavy Duty Hinges - 4 required
LENGTH OPTIONS:	83", 95" & 120"
DOOR REINFORCEMENT:	• None needed
FRAME REINFORCEMENT:	• None needed to 200 lbs • Use 16 gauge channel over 200 lbs
FIRE RATING:	Up to 3 Hours
SPECIAL FEATURES:	<ul style="list-style-type: none"> • For new construction • For renovation with new door and / or frames • No mortising of doors or frames required • Will cover hinge cut outs in frames • Flush mount no inset • Frame and door leaf alignment ribs for proper hinge location
STANDARD FINISHES:	<ul style="list-style-type: none"> • C (Clear Anodized Aluminum), D (Duro Anodized Aluminum)
SPECIAL ORDER FINISHES:	<ul style="list-style-type: none"> • PW (Painted White), G (Gold Anodized Aluminum), BL (Black Anodized Aluminum)

617HS

