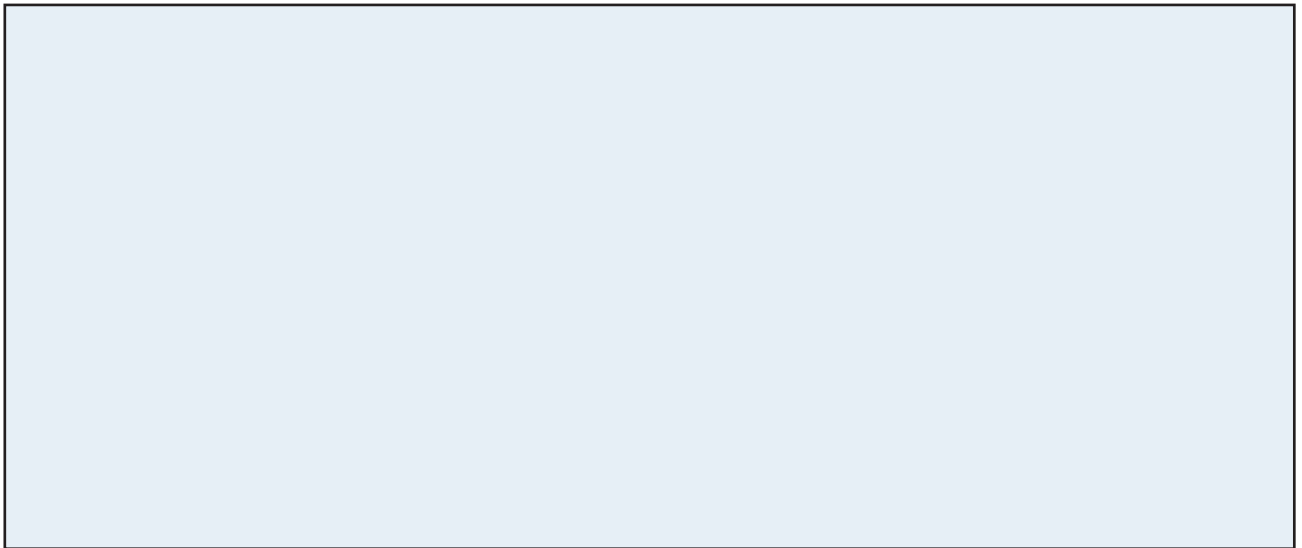
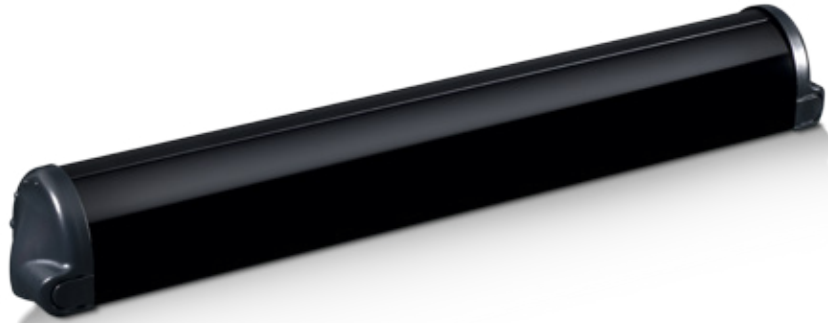




DOOR MOUNTED  
**QUADSCAN**  
PRESENCE SENSOR



**International Door Closers, Inc.**

COPYRIGHT 2018 INTERNATIONAL DOOR CLOSERS, INC

**West: 800-544-4422 • East: 800-225-6737**

**[www.intldoorclosers.com](http://www.intldoorclosers.com)**

## TECHNICAL SPECS

### Technology

Active Infrared with background suppression

### Mounting height

3' 7" to 9' 10"  
1.1 m to 3 m

### Max. number of modules

4 (or up to 6 if 24 V DC)

### Detection Field at Finished Floor (WxD)

15 3/4" x 2 3/4"  
@ 6 1/2 ft. & 4 spots active;  
400 mm x 70 mm  
@ 2.00 m & 4 spots active

### Input

1 optocoupler  
Free of potential contact  
Max. contact voltage:  
30 V  
Voltage threshold:  
high: >10 V DC  
low: <1 V DC

### Output

2 relays  
Free of potential contact  
Max. contact voltage:  
42 V AC/DC  
Max. contact current:

### Output (continued)

1 A (resistive) Max. switching power:  
30 W (DC) / 60 VA (AC)

### Supply voltage

12 V – 24 V AC  $\pm 10\%$   
12 V – 30 V DC  $-5\%$  /  $+10\%$

### Max current consumption

65 mA @ 24 V AC  
75 mA @ 24 V DC  
(EACH MODULE)

### Object Reflectivity

min 5% at IR-wavelength of 850 nm

### Degree of protection

IP53

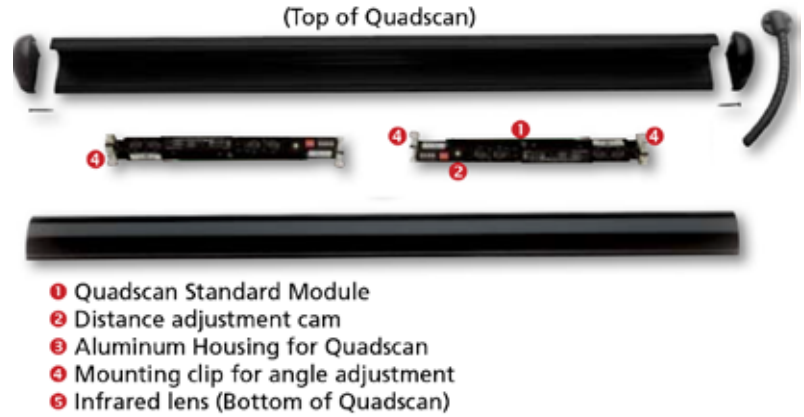
### Temperature range

-13° F to + 131° F  
(-25° C to +55° C)  
0–95% relative humidity, non condensing

### Norm conformity

EMC 2004/108/EC;  
MD 2006/42/EC  
EN ISO 13849-1:2008  
Performance Level CAT 2; EN 12978

## COMPONENTS

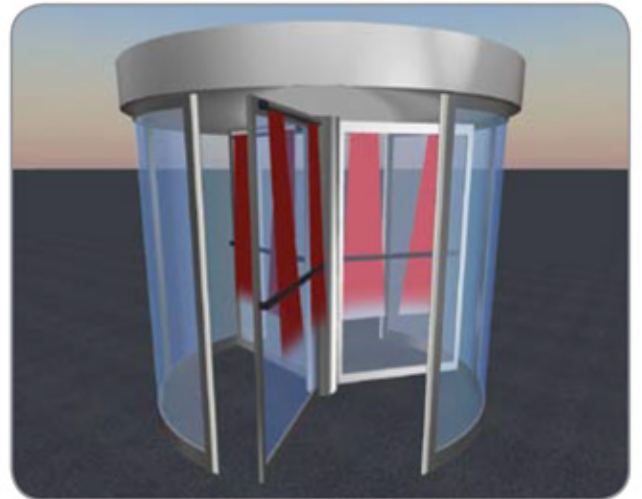
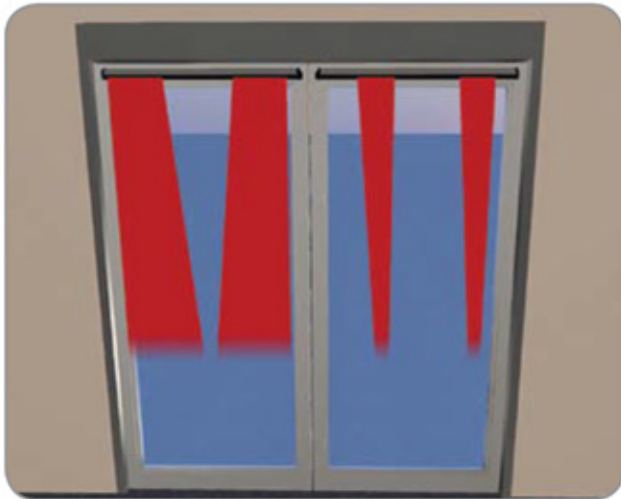


## PRODUCT LINE

- 10QUADSCANi** – Quadscan I (includes one quadscan module)
- 10QUADSCANii** – Quadscan II (includes two quadscan modules)
- 10QUADSCANiii** – Quadscan III (includes three quadscan modules)

Note 1: Custom lengths are available for non standard applications. please contact our sales team for More information.  
Note 2: the quadscan iii will not fit in the standard 36" housing.

## QUADSCAN APPLICATIONS



**Eagle**  
Flat antenna motion detector



**Br3**  
Programmable 3 Relay logic module with 12 selectable functions



**Round Push Plates:**  
Any 4.5", 6" or Panther Style



**Square Push Plates**  
Any 4.5", 4.75", 6" or Panther Style

**International Door Closers, Inc.**

COPYRIGHT 2018 INTERNATIONAL DOOR CLOSERS, INC

**West: 800-544-4422 • East: 800-225-6737**

**www.intldoorclosers.com**