



# SURFACE AND RECESS HOLDERS ELECTRO-MAGNETIC

## DOOR HOLDERS

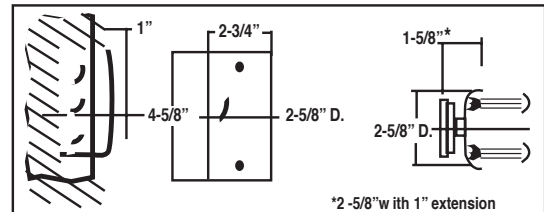


### ELECTRO-MAGNETIC DOOR HOLDERS

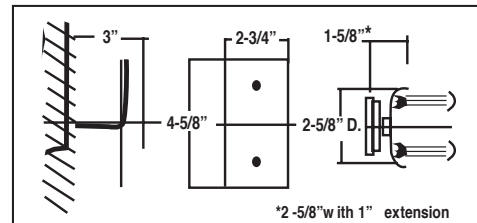
The 2000 Series Electro-magnetic Door Holders is Tri-Voltage . Each model (except 2500) can be wired 12V DC, 24V AC/DC or 120V AC. Units can be used on fire/smoke barrier doors held open until released by a remote switching device. They can also be used to just hold a door open. The armature is thru-bolted to the door for security and can be provided with any projection required. When ordering indicate, model, total projection, finish and door thickness if other than 1-3/4".

- 30-45 pound holding power (except 2500 - 300 lbs.)
- Underwriters US and Canada Listed
- California State Fire Marshal Listed
- New York City MEA
- ANSI/BHMA 156.15
- Most models available in US28, sprayed finishes and US32D
- Easy wire installation with quick insert connector
- Armature has 360° Mobility
- No Plastic Parts

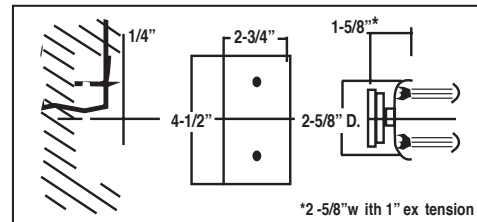
### 2100 RECESSED WALL MOUNT



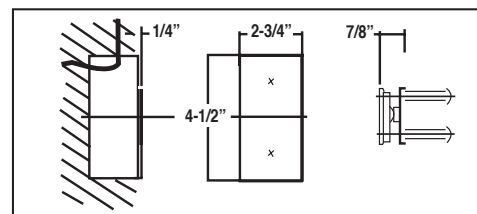
### 2300 SURFACE WALL MOUNT



### 2400 FLUSH WALL MOUNT



### 2400L FLUSH WALL MOUNT



**International Door Closers, Inc.**

COPYRIGHT 2018 INTERNATIONAL DOOR CLOSERS, INC

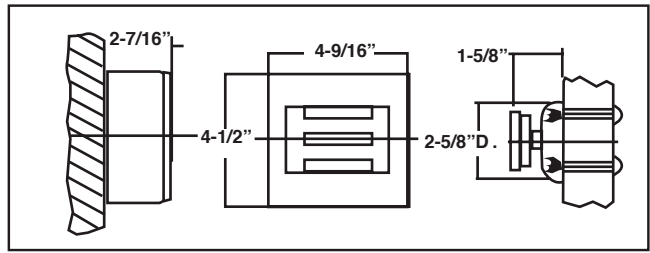
**West: 800-544-4422 • East: 800-225-6737**

**www.intldoorclosers.com**

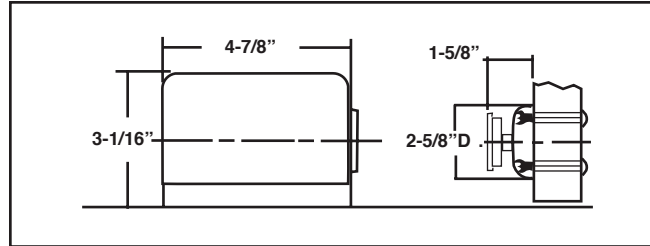
## 2500 SURFACE WALL MOUNTED



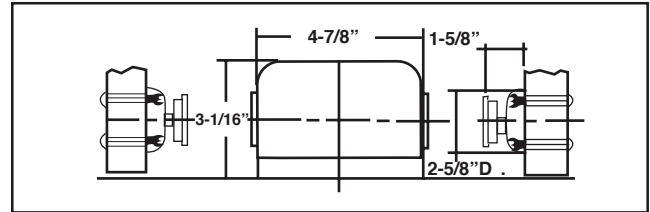
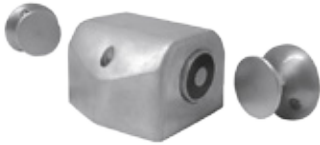
300 LBS. Holding Force 2510 - 24AC/DC



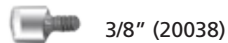
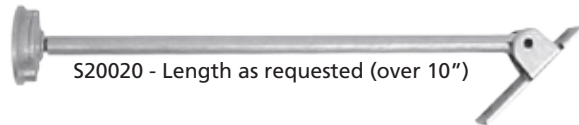
## 2600 SINGLE FLOOR MOUNT



## 2700 DOUBLE FLOOR MOUNT



## ARMATURE EXTENSIONS



20120  
120 O Swivel  
Extension



| PERFORMANCE DATA |         |       |      |
|------------------|---------|-------|------|
| MODEL            | VOLTS   | mAMPS | VA   |
| 2100, 2300       | 12DC    | 60    | .72  |
| 2400, 2600, 2700 | 24AC    | 30    | .72  |
| 2400L            | 24DC    | 30    | .72  |
|                  | 120AC   | 30    | 3.60 |
| 2510             | 24AC/DC | 105   | 1.26 |