



FIXED SPRING POWER SURFACE APPLIED

1800 SERIES

GRADE 1 • FIRE RATED • HANDICAP

FEATURES

- Narrow design permits installation on most glass and aluminum doors without adapters
- Standard application for regular arm and Top Jamb installation; parallel arm installation
- Two Adjustment Valves: Closing and Latching speeds controlled by separate regulating valves, adjustable after installation. (Three valves with optional back-check)
- Ranges of Sizes
 - Standard: 1803, 1804, and 1805
 - Back-Check: 1803-BC, 1804-BC, and 1805-BC



FINISHES

- AL - Aluminum
- DU - Storefront Bronze

10 YEAR WARRANTY

COMPLIANCE STANDARD

- Factory tested to meet or exceed ANSI 156.4 Grade 1
- Barrier Free operation to comply with Federal Accessibility Standards (ADA) complying with ANSI 117.1



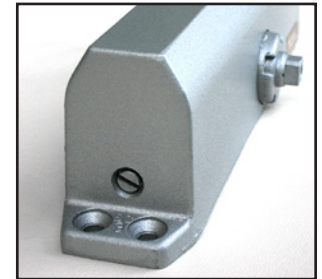
[View 3D Model Online](#)

OPTIONS AVAILABLE

- Slim or Full Plastic Cover
- Hold-Open Arm
- Drop Plates
- Sex Nuts and Bolts



• Closing and Latching Adjustment Valves



• 1803-BC, 1804-BC and 1805-BC Series Back-Check Adjustment Valve

TECHNICAL DIMENSIONS

Description	Dimensions
A. Length of Closer Body	9-3/4"
B. Horizontal Mounting Holes	9-1/16"
C. Vertical Mounting Holes	3/4"
D. Closer Body Height	1-31/32"
E. Projection from Door	2-29/32"

Front View

End View

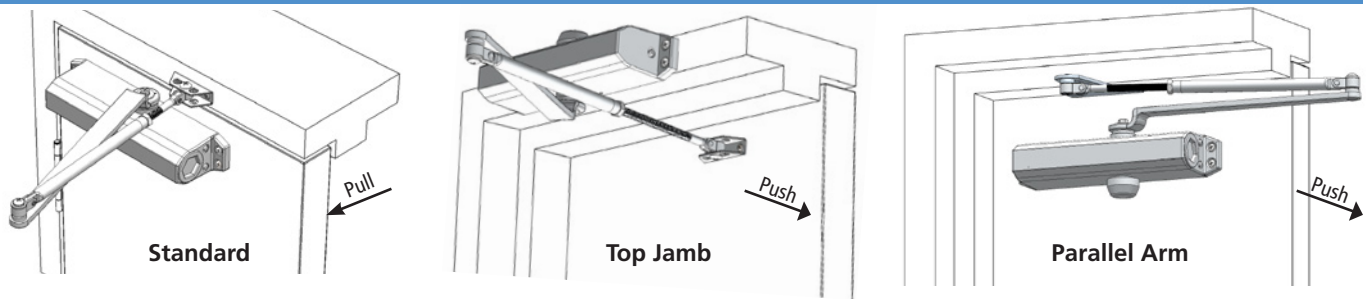
International Door Closers, Inc.

COPYRIGHT 2017 INTERNATIONAL DOOR CLOSERS, INC

West: 800-544-4422 • East: 800-225-6737

www.intldoorclosers.com









INSTALLATION TYPES



SELECTION CHART

Regular & Top Jamb				Parallel Arm			Applicable Door Weight Lbs (Kg)
Maximum Size of Door							
Closer Size	Interior	Exterior Inswing	Exterior Outswing	Closer Size	Interior	Exterior	
1	28" (0.71m)			1			33-66 (15-30)
2	36" (0.91m)			2	30" (0.76m)		66-99 (30-45)
3	42" (1.07m)	30" (0.76m)	36" (0.91m)	3	36" (0.91m)	30" (0.76m)	99-143 (45-65)
4	48" (1.22m)	36" (0.91m)	42" (1.07m)	4	42" (1.07m)	36" (0.91m)	143-187 (65-85)
5	54" (1.37m)	42" (1.07m)	48" (1.22m)	5	48" (1.22m)	42" (1.07m)	178-264 (85-120)
6	60" (1.52m)	48" (1.22m)	54" (1.37m)	6	54" (1.37m)	48" (1.22m)	264-330 (120-150)

PARTS AND ACCESSORIES - SERIES 1800

Parts	Description	Part #	
	Main Arm	520	NOTE: Doors of unusual height or weight, or doors subject to severe wind or draft conditions, or abusive usage, require one or two more full turns of hex spring adjustment nut than shown on the Installation instructions.
	Regular Forearm	521	
	Hold-Open Forearm	522	
	Parallel Bracket for Regular Arm	525	SPECIFY: Closer Model or Part Number
	Flat Drop Bracket for Closers - With Dress Cover	547	SPECIFY FINISH: AI-Aluminum DU -Storefront Bronze
	Dress Cover	DC-8000	
	Thru Bolt & Grommet Nut (Set of 4 each)	TBGN-50	
	Sex Nuts & Bolts	18-SN	