



FIXED SPRING POWER SURFACE APPLIED

# 1800 SERIES

GRADE 1 • FIRE RATED



5 YEAR WARRANTY

[Click Here For Info.](#)



## FEATURES

- Narrow design permits installation on most glass and aluminum doors without adapters
- Standard application for regular arm and Top Jamb installation; parallel arm installation
- Two Adjustment Valves: Closing and Latching speeds controlled by separate regulating valves, adjustable after installation. (Three valves with optional back-check)
- Ranges of Sizes
  - Standard: 1803, 1804, and 1805
  - Back-Check: 1803-BC, 1804-BC, and 1805-BC

## FINISHES

- AL - Aluminum
- DU - Storefront Bronze

## COMPLIANCE STANDARD

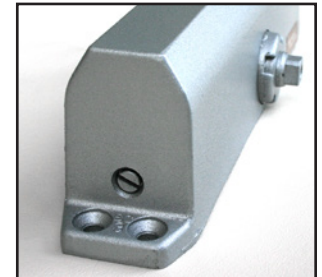
- Factory tested to meet or exceed ANSI 156.4 Grade 1

## OPTIONS AVAILABLE

- Slim or Full Plastic Cover
- Hold-Open Arm
- Drop Plates
- Sex Nuts and Bolts



• Closing and Latching Adjustment Valves



• 1803-BC, 1804-BC and 1805-BC Series Back-Check Adjustment Valve

## TECHNICAL DIMENSIONS

Description	Dimensions
A. Length of Closer Body	9-3/4"
B. Horizontal Mounting Holes	9-1/16"
C. Vertical Mounting Holes	3/4"
D. Closer Body Height	1-31/32"
E. Projection from Door	2-29/32"

Front View

End View

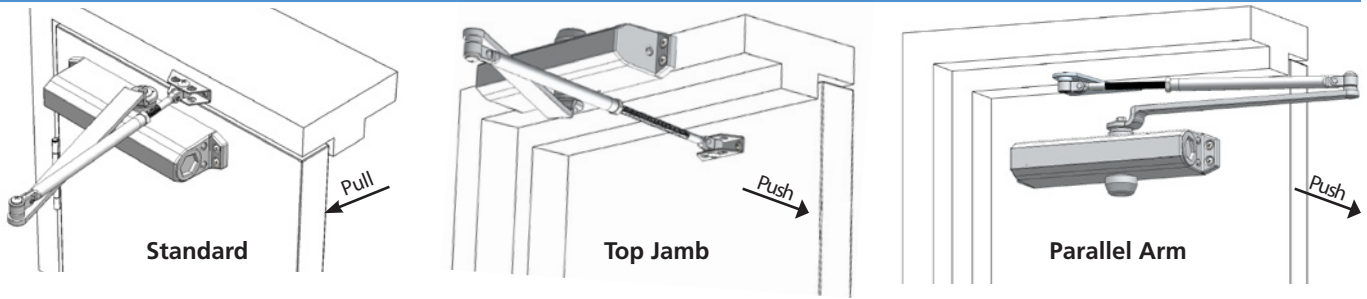
International Door Closers, Inc.

COPYRIGHT 2021 INTERNATIONAL DOOR CLOSERS, INC

West: 800-544-4422 • East: 800-225-6737

[www.intldoorclosers.com](http://www.intldoorclosers.com)









## INSTALLATION TYPES



## SELECTION CHART

Regular & Top Jamb				Parallel Arm			Applicable Door Weight Lbs (Kg)
Maximum Size of Door							
Closer Size	Interior	Exterior Inswing	Exterior Outswing	Closer Size	Interior	Exterior	
1	28" (0.71m)			1			33-66 (15-30)
2	36" (0.91m)			2	30" (0.76m)		66-99 (30-45)
3	42" (1.07m)	30" (0.76m)	36" (0.91m)	3	36" (0.91m)	30" (0.76m)	99-143 (45-65)
4	48" (1.22m)	36" (0.91m)	42" (1.07m)	4	42" (1.07m)	36" (0.91m)	143-187 (65-85)
5	54" (1.37m)	42" (1.07m)	48" (1.22m)	5	48" (1.22m)	42" (1.07m)	178-264 (85-120)
6	60" (1.52m)	48" (1.22m)	54" (1.37m)	6	54" (1.37m)	48" (1.22m)	264-330 (120-150)

## PARTS AND ACCESSORIES - SERIES 1800

Parts	Description	Part #	
	Main Arm	520	<b>NOTE:</b> Doors of unusual height or weight, or doors subject to severe wind or draft conditions, or abusive usage, require one or two more full turns of hex spring adjustment nut than shown on the Installation instructions.
	Regular Forearm	521	
	Hold-Open Forearm	522	
	Parallel Bracket for Regular Arm	525	<b>SPECIFY:</b> Closer Model or Part Number
	Flat Drop Bracket for Closers - With Dress Cover	547	<b>SPECIFY FINISH:</b> AI-Aluminum DU -Storefront Bronze
	Dress Cover	DC-8000	
	Thru Bolt & Grommet Nut (Set of 4 each)	TBGN-50	
	Sex Nuts & Bolts	18-SN	