



FOR ACCESS CONTROL APPLICATIONS

10 SERIES

KEYSWITCHES

FEATURES

Available in 3 styles:

- Single gang, Jamb, Combination Jamb Plate /Keyswitch
- Available with momentary or maintained contact
- The Combo Plate allows for independent operation of the Push Plate and Keyswitch, or allows the Keyswitch to activate and disable the Push Plate.
- Includes a cherry switch with NO/NC or COM contacts
- Aesthetically pleasing design allows for easy installation and use

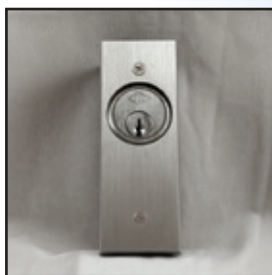


STAINLESS STEEL

Keyswitches add an additional level of security by providing an economical and efficient way to control or restrict access in a variety of applications.

**Note: Mortise Cylinder Not Included*

EASY INSTALLATION MULTIPLE STYLES



10JAMBSWITCHMOM
10JAMBSWITCHONF



10KEYSWITCHMOM
10KEYSWITCHONF



10COMBOPLATEMOM
10COMBOPLATE

International Door Closers, Inc.

COPYRIGHT 2017 INTERNATIONAL DOOR CLOSERS, INC

West: 800-544-4422 • East: 800-225-6737

www.intldoorclosers.com

TECHNICAL SPECIFICATIONS

Keyswitch (Single Gang)

Switch Voltage
125/250 VAC

Switch Current
6A/3A

Dimensions
4¾"H x 3"W x ¼"D

Mortise Cylinder
1½" – Not Included

Mounting Options
Most Single-Gang Boxes

Contacts
NO/NC/COM

Keyswitch (Jamb)

Switch Voltage
125/250 VAC

Switch Current
6A/3A

Dimensions
4¾"H x 1¾"W x ¼"D

Mortise Cylinder
1½" – Not Included

Mounting Options
Most Jamb Style Boxes

Contacts
NO/NC/COM

Combo Plate (Keyswitch)

Switch Voltage
125/250 VAC

Switch Current
6A/3A

Dimensions
4½"H x 4½"W x ¼"D

Mortise Cylinder
1½" – Not Included

Mounting Options
Standard 2G Electrical Box

Contacts
NO/NC/COM

Combo Plate (Push Plate)

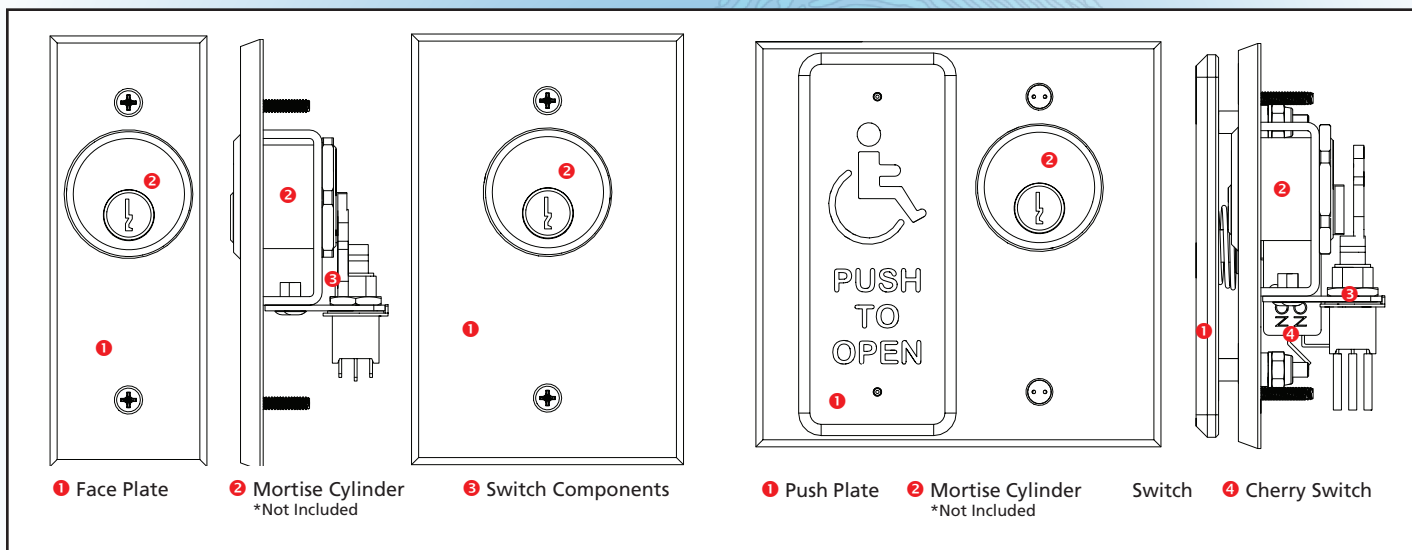
Switch Voltage
125 VAC

Switch Current
15A

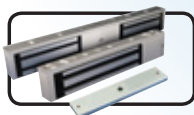
Dimensions (Plate Only)
4¼"H x 1¾"W x ¼"D

Cherry Switch Properties
SPST / Momentary Contact

KEYSWITCH DETAILS



RELATED PRODUCTS



Maglocks
UL Listed, electromagnetic locks offer the ultimate protection for most access control applications



MS08U
Touchless Push Plate utilizing microwave motion technology



RF-433
433 MHz digital receivers and transmitters with sequencing function