



STAINLESS STEEL ROLLER LATCHES

ROLLER LATCHES

HARDWARE



IDC Roller Latches are easily adjustable for roller projection for proper contact between roller and frame strike. Adjustment is made with 2 screws on the face of the roller latch body. Maximum roller projection is 5/16". The nylon roller provides durability and quiet operation. All units are stainless steel construction. Meets ANSI/BHMA A156.16, E19091. Available in most architectural finishes. Custom strikes available.

1890



- Cast full lip strike 1-11/16" wide x 2-1/4"
- Latch face 1" x 3-3/8"
- Fasteners
Body (2) #10 x 3/4" FH SMS
Strike (2) #8 x 3/4" FH SMS

1890S



- Custom Strike for double acting doors
- Latch face 1" x 3-3/8"
- Fasteners
Body (2) #10 x 3/4" FH SMS
Strike #8 x 3/4" FH SMS
(Quantity determined by width)

1891



- ASA Strike 1-1/8" wide x 4-3/4"
- Latch face 1" x 3-3/8"
- Fasteners
Body (2) #10 x 3/4" FH SMS
Strike (2) #12-24 x 3/8" FH MS

1892



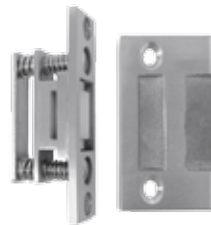
- T Strike 1-1/8" wide x 2-3/4"
- Latch face 1" x 3-3/8"
- Fasteners
Body (2) #10 x 3/4" FH SMS
Strike (2) #10 x 3/4" FH SMS

1893



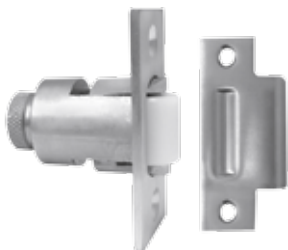
- With integrated angle stop
- Mounts in header with strike at top of door
- Cast strike 1-1/8" wide x 2-1/4"
- Latch face 1-1/2" x 4-1/2"
- Fasteners
Body (2) #10 x 3/4" FH SMS
Strike (2) #10 x 3/4" FH SMS

1894



- Extended cast strike 2-1/8" wide x 2-1/4"
- Latch face 1" x 3-3/8"
- Fasteners
Body (2) #10 x 3/4" FH SMS
Strike (2) #8 x 3/4" FH SMS

1895



- Roller projection can be adjusted by turning the knurled knob at the back of the latch
- Maximum roller projection 1/2" to compensate for different door clearances
- Uses standard heavy duty cylindrical lock cut-out
- Standard strike 1-1/8" wide x 2-3/4"
- Body 1-1/8" wide x 2-1/4"
- For roller latch with ASA strike order 1896 (1-1/4" wide x 4-7/8")
- Fasteners
Body (2) #8 x 3/4" FH SMS
Strike (2) #10 x 3/4" FH SMS
ASA Strike #12-24 x 3/4 FH SMS

International Door Closers, Inc.

COPYRIGHT 2014 INTERNATIONAL DOOR CLOSERS, INC

West: 800-544-4422 • East: 800-225-6737

www.intldoorclosers.com