



## Gate EMLock® 1570 Series

### Electromagnetic Gate Locks Magnetic Bond Sensor Standard

IDC's Gate EMLock® provides 1200lbs of holding force and enables the access and egress control of pedestrian and vehicle gates. Access controls such as card readers, digital keypads and remote control stations provide gate and lock control.

Gate EMLocks are compatible with manual and automatic, swinging and sliding, tubular and iron gates. The floating armature design compensates for gate misalignment with the electromagnet.



#### Weatherized

IDC Gate EMLocks are totally sealed in an epoxy filled stainless steel case. A threaded conduit fitting ensures weather resistant protection of the wiring.

#### Application

With no moving parts to bind or wear, the Gate EMLock® is inherently failsafe and will unlock automatically during a power outage. For security applications, the IDC 600 series power supplies with battery backup capability, provide continuous operation for up to 35 hours with just two 12VDC, 7 Amp Hour batteries.

#### Features

- Stainless Steel Case
- Epoxy filled for weather resistance
- Threaded conduit fitting
- Built-in voltage kickback protection
- Low power consumption
- Built-in bond sensor (BAS)

#### Ordering Information

- Model**  
**1575U** Standard mounting with magnetic bond sensor  
**1576U** Face drilled with magnetic bond sensor
- Options**  
**1576-BK** Mounting "L" bracket for 1576  
**1576-MP** Mounting plate for 1576  
**1576-ZB** Armature "Z" bracket for 1576  
**1576-AB** Armature angle bracket for 1576  
**BR64** Full wave bridge rectifier for AC operation

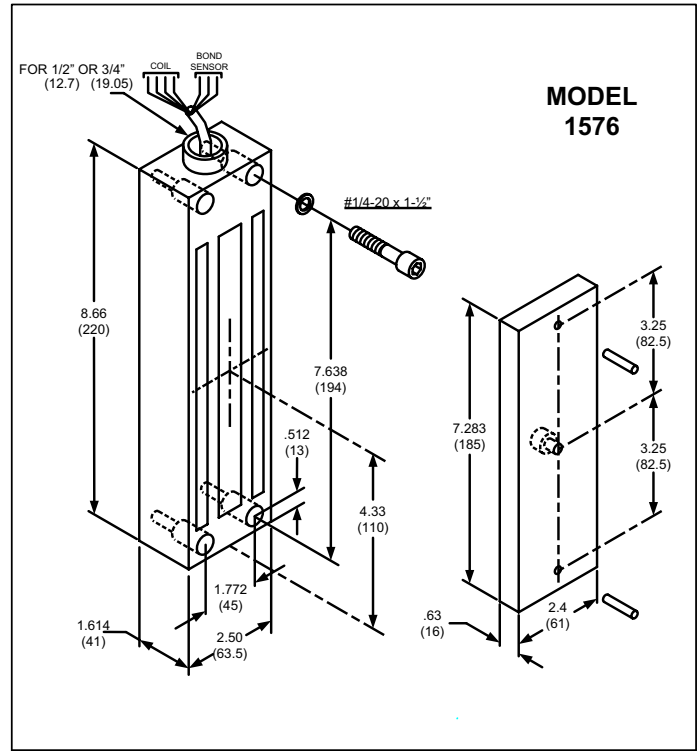
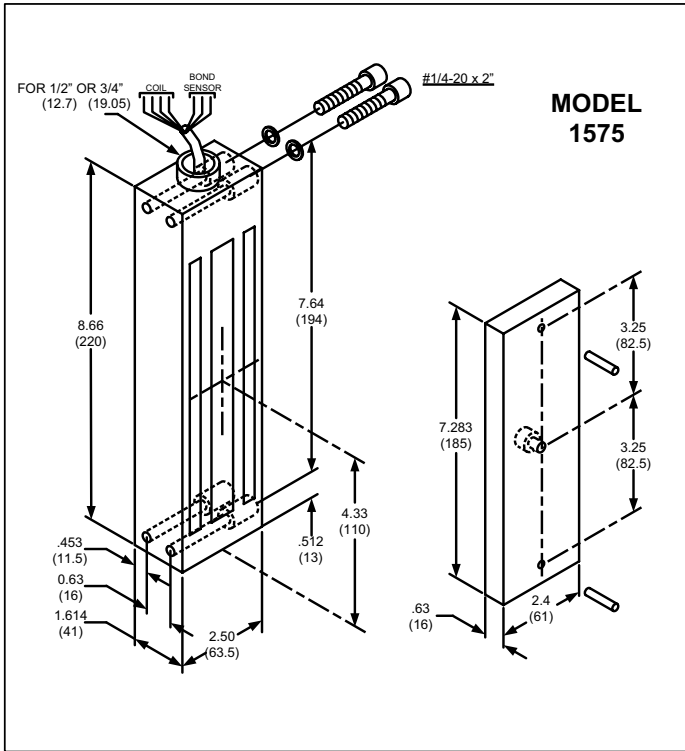
#### Specifications

##### Electrical Specifications

- Holding Force** 1200lbs  
**Voltage Input:** 450mA @ 12VDC  
 225mA @ 24VDC
- Bond Sensor**  
**Output:** 125mA @ 12/24VDC  
**Wire Leads:** 24 AWG, 3ft. long  
**Conduit Fitting:** 0.5" Length, 0.75" outside thread,  
 0.5" inside thread

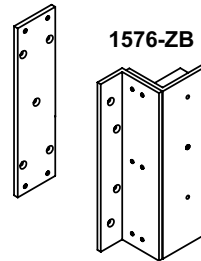
##### Mechanical Specifications

- Lock:** 8.66"L x 2.5"H x 1.61"T  
**Armature:** 7.283"L x 2.4"H x 0.63"T  
**Case:** Stainless steel

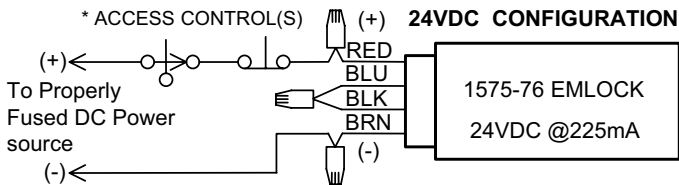
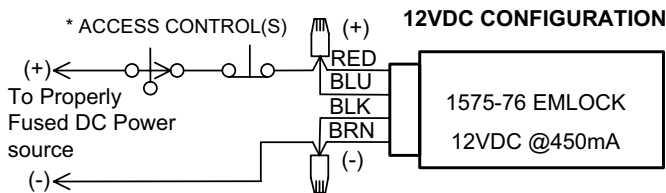
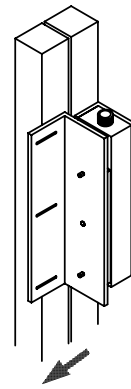
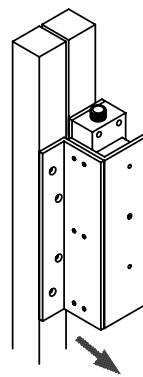
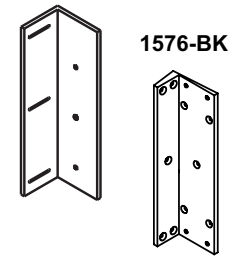


MAGNETIC BOND SENSOR WIRING		
Wire Color	Contact	Description
Yellow	N/O	Good Bond
Green	Common	Common
Orange	N/C	No/Poor Bond

1576-MP



1576-AB



West: International Door Closers, Inc.  
 1140 Kraemer Place, Anaheim, CA 92806  
 Tel: (714) 666-0390 • (800) 544-4422  
 Fax: (714) 666-2215

East: International Door Closers, Inc.  
 1920 Air Lane Drive, Nashville, TN 37210  
 Tel: (615) 885-7060 • (800) 225-6737  
 Fax: (615) 885-0903