



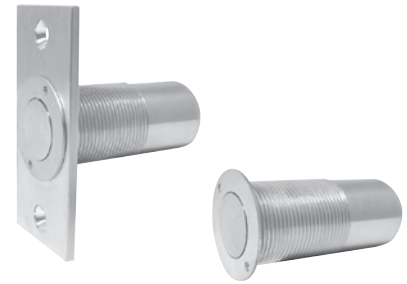
STRIKES & RESCUE STOPS

DUST PROOF STRIKE

1870 FOR DOORS WITHOUT THRESHOLDS

1872 FOR DOORS WITH THRESHOLDS

- For use with any ABH flush bolts
- Prevents dirt, dust and debris from floor clogging strikes



1870

1872

COMBO DOUBLE LIPPED STRIKE AND RESCUE STOP

- For 5-3/4" and 6-3/4" frame with 1-3/4" door
- To be used with ABH 0127 or 0128 center hung pivot sets. Ideal for hospital or nursing home bathroom doors. Stop can be rotated into frame to allow center hung or 1/8" inset double acting doors to swing out in case of emergency.
- Available in US32D, US32, US3, US4, US10B.
- .093 thick material
- Meets ANSI A1882
- Custom sizes available
- Holdback option available (CR4550,60,70,80 only) - (handed)



CR4550/60



CR4570/80



CR4591/92



CR4594/93

FOR CENTER HUNG DOORS

- CR4550/CR4591 5-3/4" x 2-3/4"
- CR4560/CR4592 6-3/4" x 2-3/4"

FOR 1/8" INSET DOOR

- CR4570/CR4594 5-3/4" x 2-3/4"
- CR4580/CR4593 6-3/4" x 2-3/4"

4590 RESCUE STOP

FOR CONVERTING A DOUBLE ACTING CENTER HUNG DOOR TO SINGLE ACTING

- Allows door to swing open in opposite direction if a hospital or nursing home patient falls and obstructs the normal swing of the door
- Meets ANSI Spec A1882
- Stainless steel, US32D standard
- Pushing in on the spring loaded stop allows emergency operation of the door. Stop automatically returns to normal position when released

