



SLEEK AND RELIABLE PASSIVE INFRARED TECHNOLOGY

FLY KIT

PIR SENSOR

IDC'S SMALLEST & MOST ACCURATE PIR SENSOR



Note: Only one (1) Fly sensor included with each kit

FEATURES

- Cost effective kits make the Fly an economical sensor perfect for many security applications.
- The microprocessor provides a highly accurate detection zone that is easily field adjustable.
- Passive infrared (PIR) technology provides a reliable signal for request to exit (REX) applications.
- DIP switches and sensing field adjustment mask allow for custom, user-defined settings.
- An Extended Relay Time (ERT) version is available for hold times of 15 or 30 seconds.

Ceiling or Surface Mounting

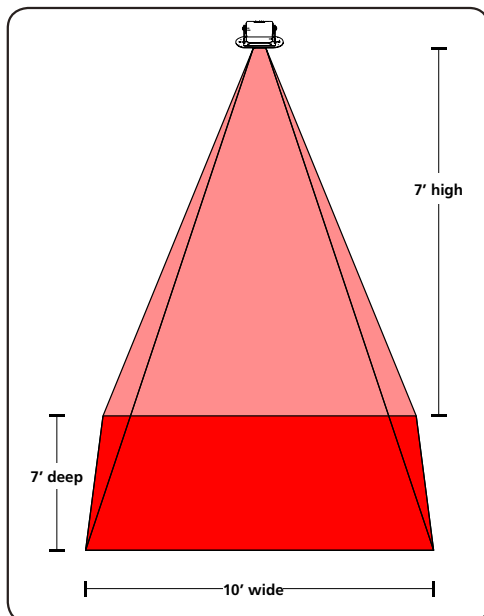
APPLICATIONS

- Releasing a maglock or electric strike on manual or automatic doors
- Request to Exit (REX) applications
- Controlling traffic flow

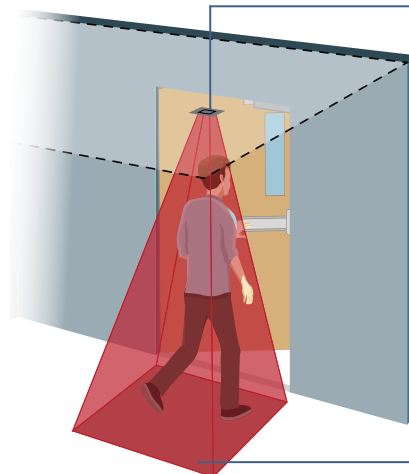
The Fly is a sensor utilizing passive infrared technology, small enough to fit in the palm of your hand.

The Fly Kit is a package containing the standard Fly sensor, the ceiling mount adapter and the surface mount adapter, all available in either a black or white finish.

Sensor Pattern ■



Recessed Ceiling Mount (FCA) ■



Featured as a part of IDC's Security product line, the Fly provides a simple PIR solution.

The Fly recognizes objects emitting a heat signature within its detection zone, such as a person.

This type of technology is ideal for applications where debris or inanimate objects may cause false detections.

Passive Infrared Detection Zone ■

International Door Closers, Inc.

COPYRIGHT 2014 INTERNATIONAL DOOR CLOSERS, INC

West: 800-544-4422 • East: 800-225-6737

www.intldoorclosers.com



REQUIRED DETECTION CRITERIA

10 FLY KIT BLK COMPONENTS



FLY / FLY ERT
Std. Fly Sensor /
Fly ERT Sensor



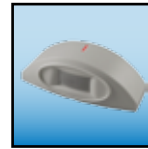
FSA
Fly Surface
Adapter



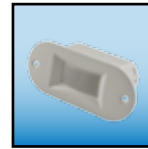
FCA
Fly Ceiling
Adapter



FLY / FLY ERT
Std. Fly Sensor /
Fly ERT Sensor



FSA
Fly Surface
Adapter



FCA
Fly Ceiling
Adapter

10 FLY KIT WHT COMPONENTS

FLY KIT

IDC'S SMALLEST & MOST ACCURATE PIR SENSOR

Included Components



Sensing Field
Adjustment Mask



9' 0" Cable



ELECTRIC STRIKES



MAGLOCKS



REX PUSH BUTTONS



Br3 LOGIC MODULE

REQUEST TO EXIT PRODUCT FAMILY

TECHNICAL SPECIFICATIONS

| | |
|----------------------------------|--|
| Technology | Passive Infrared with microprocessor |
| Mounting Height | Recommended: 6' 6" – 8' 0" Maximum: 10' 0" |
| Mounting Angles | 0° to 180° |
| Power Supply | 12 to 24 VAC; ±10%; (50/60 Hz) 12 to 24 VDC; -10% / +30% |
| Current Consumption | <10 mA (20 mA if the relay output is activated) |
| Contact Rating | 1 A / 75 VDC or 50 VAC (potential free contact NO/NC) |
| Optical Characteristics | Passive infrared with four elements 15 Fresnel lenses with full independent masking possibilities |
| Warm-up Time | 10 seconds |
| Response Time | Maximum: 200 microseconds |
| Relay Hold Time | Standard Fly 0.5 or 2 seconds Fly Extended Relay Time 15 or 30 seconds |
| Operating Temperature | -22°F to +140°F (-30°C to +55°C) |
| Immunity | Electrical and radio frequency interference |
| Cable | 9' 0" of 4-conductor cable with 5-pin connector |
| Weight | 1.4 oz (40 g) |
| Sensor Dimensions (WxHxD) | 4.0" x 1.5" x 1.0" |

Specifications are subject to change without prior notice.

DISCLAIMER This document as well as all other enclosed documents (quotation / specification / other) are provided «as is» without warranties of any kind, either expressed or implied, including but not limited to the implied warranties of merchantability, fitness for a particular purpose, or non-infringement. / Information is supplied upon the condition that the persons receiving it will make their own determination as to its suitability for their purposes prior to use. In no event will IDC be responsible for damages of any nature whatsoever resulting from the use of or reliance upon information from this document or the products to which the information refers. / IDC has the right without liability to change descriptions and specifications at any time. / Prices, shipping and availability are subject to change without prior notice.

