



# SURFACE AND RECESS HOLDERS ELECTRO-MAGNETIC

## DOOR HOLDERS

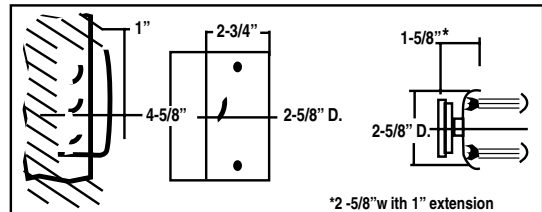


### ELECTRO-MAGNETIC DOOR HOLDERS

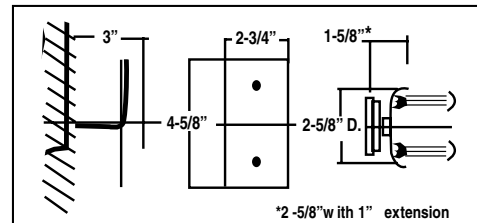
The 2000 Series Electro-magnetic Door Holders is Tri-Voltage . Each model (except 2500) can be wired 12V DC, 24V AC/DC or 120V AC. Units can be used on fire/smoke barrier doors held open until released by a remote switching device. They can also be used to just hold a door open. The armature is thru-bolted to the door for security and can be provided with any projection required. When ordering indicate, model, total projection, finish and door thickness if other than 1-3/4".

- 30-45 pound holding power (except 2500 - 300 lbs.)
- Underwriters US and Canada Listed
- California State Fire Marshal Listed
- New York City MEA
- ANSI/BHMA 156.15
- Most models available in US28, sprayed finishes and US32D
- Easy wire installation with quick insert connector
- Armature has 360° Mobility
- No Plastic Parts

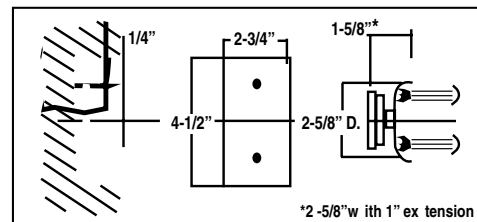
### 2100 RECESSED WALL MOUNT



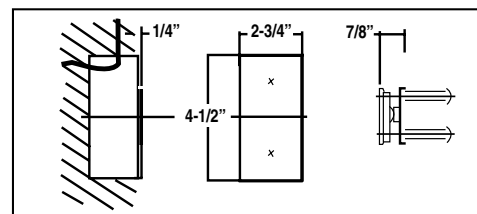
### 2300 SURFACE WALL MOUNT



### 2400 FLUSH WALL MOUNT



### 2400L FLUSH WALL MOUNT



**International Door Closers, Inc.**

COPYRIGHT 2014 INTERNATIONAL DOOR CLOSERS, INC

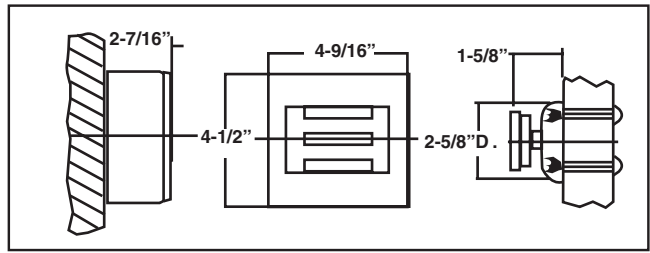
**West: 800-544-4422 • East: 800-225-6737**

**www.intldoorclosers.com**

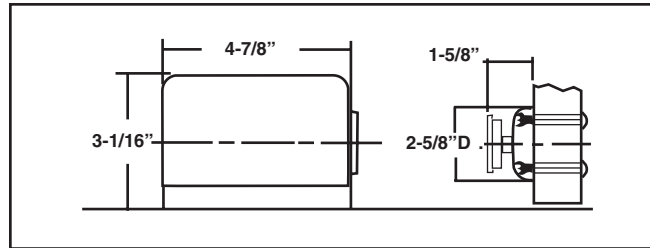
## 2500 SURFACE WALL MOUNTED



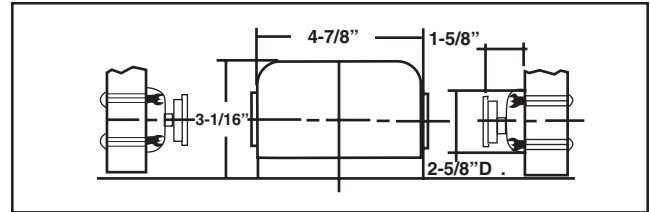
300 LBS. Holding Force 2510 - 24AC/DC



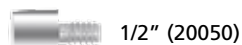
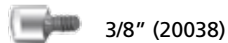
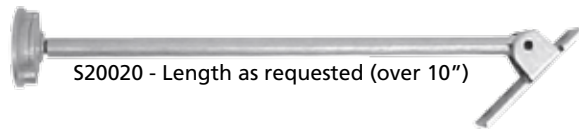
## 2600 SINGLE FLOOR MOUNT



## 2700 DOUBLE FLOOR MOUNT



## ARMATURE EXTENSIONS



20120  
120 O Swivel  
Extension



PERFORMANCE DATA			
MODEL	VOLTS	mAMPS	VA
2100, 2300	12DC	60	.72
2400, 2600, 2700	24AC	30	.72
2400L	24DC	30	.72
	120AC	30	3.60
2510	24AC/DC	105	1.26