



5 YEAR WARRANTY

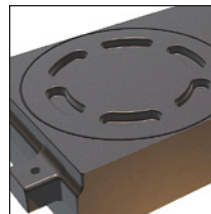
OVERHEAD CONCEALED CLOSER D200 SERIES



FEATURES

- I.D.C. provides **LEAK-FREE guaranteed performance** under the most demanding conditions.
 1. Steel spring cap is now on top of closer body utilizing a new high performance O-Ring and epoxy sealed threads for double protection.
 2. New automotive type heavy duty spindle seal replacing old standard O-ring technology.
 3. All three adjustment valves now with two high performance O-rings for double protection.
 4. Steel end caps incorporating new high performance O-rings and also epoxy sealed threads for double protection.
 5. Adjustable back check after 80° to prevent the door from slamming open.
- Underwriters' Laboratories Inc. Listed - units without built-in hold-open
- **CENTER HUNG DOORS:** Double or Single Acting (Door stop applied to frame renders unit Single Acting). Adjustable "S" type side loading or "A" type, "K" type and "PT" type end loading top arms are available for center pivoted applications.
- Built-in positive back stop and hold-open positions available:
 - 105° Back Stop with Hold-Open
 - 105° Back Stop - no Hold-Open
 - 90° Back Stop with Hold-Open
 - 90° Back Stop - no Hold-Open
- ADA spring tensions available for use on center pivoted applications:
 - 5 lb. opening force (Interior door)
 - 8-1/2 lb. opening force (Exterior door)
- Standard spring tensions available:
 - **LIGHT, MEDIUM, HEAVY & EXTRA HEAVY**
- Three control valves: Closing speed, latching speed and back check, fully adjustable after installation.
- Fits in an aluminum header or transom bar as small as 1-3/4" x 4".
- Positive centering for alignment and to hold door closed against any normal wind or draft.
- Stable hydraulic door check fluid for any climatic operation and constant lubrication.

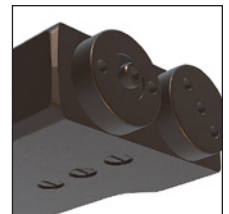
NEW IMPROVED FEATURES



1) Steel spring cap is now on top of closer body utilizing a new high performance O-Ring and epoxy sealed threads for double protection.



2) New automotive type heavy duty spindle seal replacing old standard O-ring technology.



3) All three adjustment valves now with two high performance O-rings for double protection.

4) Now with steel end caps incorporating new high performance O-rings and epoxy sealed threads for double protection.

5) Adjustable back check after 80° to prevent the door from slamming open.



[View 3D Model Online](#)

Center Hung Doors: Complete units for aluminum doors and frames are furnished with top arm assembly (adjustable 'S' side loading, "A" end loading, "K" end loading or "PT" end loading), adjustable dual purpose 3010-DP bottom pivot set for floor or threshold mounting (side or end loading) and 3010-FS anchor set with all fasteners. 3010-G and 3010-GE bottom pivot sets are available, but must be ordered separately.

"S" type side loading top arms and 3010-DP adjustable dual purpose pivot set and 3010-FS anchor set will be furnished unless otherwise specified.

"A" type, "K" type or "PT" type end loading and "JO" or "VO" type offset arms are optional, but must be specified.

"G" and "GE" type pivot sets are available, but must be ordered separately.

Offset Hung Doors: Single Acting. Offset "JO" and "VO" type top arms are available for butt hinge or offset pivot applications.

(Offset Pivots or Butt Hinges not included. Top Door Stop/ Arm Cover by others – fabrication drawings available.)



International Door Closers, Inc.

COPYRIGHT 2017 INTERNATIONAL DOOR CLOSERS, INC

West: 800-544-4422 • East: 800-225-6737


www.intldoorclosers.com

DOOR SIZE CHART - SCHEDULE OF MODELS AND TYPES

	DOOR SIZE	SPRING TENSION	TYPE	MODEL WITH "S" "A" "K" OR "PT" ARM	MODEL WITH "JO" OR "VO" OFFSET ARM
<p>NOTE: Doors of sizes over the schedule, or of excessive weight, or doors subject to severe wind or draft conditions, or abusive usage, require the next stronger model closer.</p> <p>SPECIFY: Closer Model Number and Type of Top Arm, Anchor and/or Pivot Set.</p> <p>SPECIFY FINISH: For 3010-JO or 3020-VO Arms AL - Satin Aluminum DU - Storefront Bronze</p> <p>WARRANTY: 5 Year Warranty</p>	From 36" to 48" X 96"	ADA 5lb. (INTERIOR) 	105° Back Stop with Hold-Open 105° Back Stop - no Hold-Open 90° Back Stop with Hold-Open 90° Back Stop - no Hold-Open	D200 D201 D202 D203	NA NA NA NA
	From 36" to 48" X 96"	ADA 8-1/2lb. (EXTERIOR) 	105° Back Stop with Hold-Open 105° Back Stop - no Hold-Open 90° Back Stop with Hold-Open 90° Back Stop - no Hold-Open	D210 D211 D212 D213	NA NA NA NA
	Up to 30" X 96"	LIGHT	105° Back Stop with Hold-Open 105° Back Stop - no Hold-Open 90° Back Stop with Hold-Open 90° Back Stop - no Hold-Open	D220 D221 D222 D223	D220 X JO or VO D221 X JO or VO D222 X JO or VO D223 X JO or VO
	31" to 41" X 96"	MEDIUM	105° Back Stop with Hold-Open 105° Back Stop - no Hold-Open 90° Back Stop with Hold-Open 90° Back Stop - no Hold-Open	D230 D231 D232 D233	D230 X JO or VO D231 X JO or VO D232 X JO or VO D233 X JO or VO
	42" to 48" X 96"	HEAVY	105° Back Stop with Hold-Open 105° Back Stop - no Hold-Open 90° Back Stop with Hold-Open 90° Back Stop - no Hold-Open	D240 D241 D242 D243	D240 X JO or VO D241 X JO or VO D242 X JO or VO D243 X JO or VO
	*42" to 48" up to 102"	EXTRA HEAVY	105° Back Stop with Hold-Open 105° Back Stop - no Hold-Open 90° Back Stop with Hold-Open 90° Back Stop - no Hold-Open	D250 D251 D252 D253	D250 X JO or VO D251 X JO or VO D252 X JO or VO D253 X JO or VO
	*Not to Exceed 450lbs.				

PARTS AND ACCESSORIES

PART NO.

	Unit Body (Specify: Spring Tension & degree of Back Stop & Hold open)	D2000-B
	"S" Type Adjustable Side Loading Top Arm Assembly (1/2" Depth Top Rail)	3010-S
	"A" Type End Loading Top Arm Assembly (1" Depth Top Rail)	3010-A
	"K" Type End Loading Top Arm Assembly (5/8" Depth Top Rail)	3010-K
	"PT" Type End Loading Top Arm Assembly (7/8" Depth Top Rail)	3010-PT
	"JO" Type Offset Top Arm Assembly Mortised Type (9/16" Depth Top Rail)	Painted Arm -Aluminum Storefront Bronze 3010-JO x AL 3010-JO x DU
	"VO" Type Offset Top Arm Assembly Surface Type (7/8" Depth Top Rail)	Painted Arm -Aluminum Storefront Bronze 3020-VO x AL 3020-VO x DU
	Anchor Set (Standard)	3010-FS
	Adjustable Dual Purpose Bottom Pivot Set (Standard)	3010-DP
	Adjustable Floor Mount Bottom Pivot Set (Optional)	3010-G
	Adjustable Threshold Mount Bottom Pivot Set (Optional)	3010-GE

International Door Closers, Inc.

West: 800-544-4422 • East: 800-225-6737

COPYRIGHT 2017 INTERNATIONAL DOOR CLOSERS, INC

www.intldoorclosers.com