



MORTISE & RIM CYLINDERS • CYLINDER GUARD • LOCK INDICATOR

CYLINDERS

HARDWARE

CZ-1001 (ZINC) MORTISE KEY CYLINDER

- 1" Length 5 pin Cylinder 1-5/32" diameter
- AR MS-Type cam
- Keyway available:
Schlage "C", Yale "8"
- Core face and Key US 26D
- Cylinder ring 3/16" standard, 5/32" and 7/32" optional
- Finishes Available: Specify : Keyway
AL - Anodized Satin Aluminum
BK - Anodized Black
DU - Anodized Bronze



Specify: Cylinder ring type KA-2 or KA-(quantity) Finish

TZ-3001 (ZINC) MORTISE THUMBTURN CYLINDER

- 1" Length Cylinder 1-5/32" diameter
 - AR MS-Type cam
 - Thumbturn US 26D
 - Cylinder ring 3/16" standard, 5/32" and 7/32" optional
 - Finishes Available:
AL - Anodized Satin Aluminum
BK - Anodized Black
DU - Anodized Bronze
- Specify: Cylinder ring type



DC-2001 (ZINC) MORTISE DUMMY CYLINDER

- 7/8" Length Cylinder
1-5/32" diameter
- No Keyway or cam
- Cylinder ring 3/16" standard,
5/32" and 7/32" optional
- Finishes Available: Specify: Cylinder ring type
AL - Anodized Satin Aluminum Finish
BK - Anodized Black
DU - Anodized Bronze



Specify: Cylinder ring type

CG-4043 CYLINDER GUARD

- Hardened steel security ring
- Free-spinning beveled collar
- For standard face 5 pin Mortise key cylinder
- For use on Aluminum
- Furnished with retaining clip and two spacers
- Finishes Available:
AL - Baked Satin Aluminum Paint
BK - Baked Black Paint
DU - Baked Storefront Bronze Paint

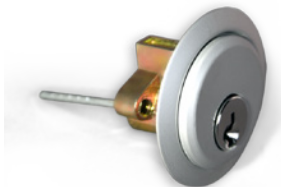
Specify: Finish



RZ-1003 (ZINC) RIM CYLINDER

- 5 pin Cylinder
- Core face and Key US 26D
- Schlage "C" Keyway
- Low profile Cylinder ring and adaptor plate standard
- 1-7/8" Break-away screws and 1-1/4" Break-away
Spindle standard
- Finishes Available:
AL - Anodized Satin Aluminum
BK - Anodized Black
DU - Anodized Bronze

Specify: Finish



LI-4089 LOCK INDICATOR SET

- For use with DH-1820 and DT-1850 type Deadlocks
 - LOCKED in red and OPEN in green letters on
white background
 - Includes adhesive backed HS-4089
- Header Sign THIS DOOR MUST
REMAIN UNLOCKED DURING
BUSINESS HOURS**

- Finishes Available:
AL - Baked Satin Aluminum Paint
BK - Baked Black Paint
DU - Baked Storefront Bronze Paint
- Specify: Finish



International Door Closers, Inc.

COPYRIGHT 2014 INTERNATIONAL DOOR CLOSERS, INC

West: 800-544-4422 • East: 800-225-6737

www.intldoorclosers.com