



UNI-FLEX™ SERIES MULTI-APPLICATION ELECTRIC STRIKE

UniFLEX™ 45 SERIES

UNIVERSAL ELECTRIC STRIKE

Uni-Flex™ Series Multi-Application Electric Strike

- **Centerline Electric Strike**
- **4 Interchangeable Application Faceplates**
- **Full Monitoring is Standard, Including:
Latched and Unlatched Status
Keeper Closed and Deadlocked or Unlocked
Keeper Open Status Optional**
- **Reversible Failsafe/Failsecure, no disassembly**
- **1/4" Horizontal Alignment Adjustment**
- **Plated Architectural Finishes Available**

The IDC Uni-Flex electric strike is designed for use with locksets with up to 3/4" latchbolts*. The quality construction makes the 45 series ideal for high traffic applications. The compact low profile design enables quick and easy installation where jamb space is limited.



Features

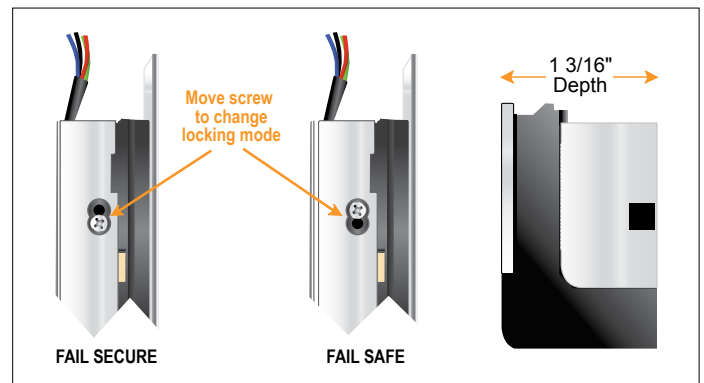
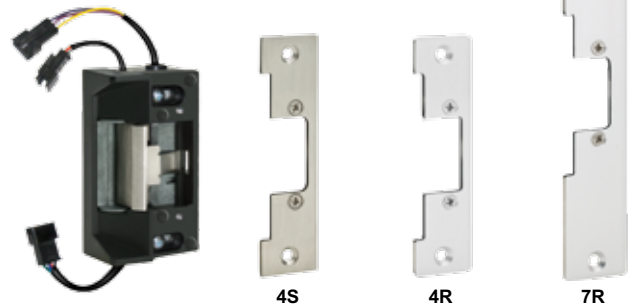
- For 5/8" latch or 3/4" latch with 1/8" door gap
- Latch position status standard
- Keeper closed & deadlocked/unlocked status standard
- Field selectable failsecure - failsafe
- Field selectable voltage, 12/24V AC/DC
- 1/4" Horizontal alignment adjustment
- Low profile, 1-3/16" deep
- Plug-in wire connectors
- Mounting tabs
- Non-handed
- All stainless steel parts with durable die cast body for corrosion resistance
- Fewer moving parts for maximum life
- Stainless steel standard with square corner faceplate
- Aluminum standard with radius corner faceplate
- ANSI/ BHMA A156.31, Grade 2



US Patent: 7,540,542

Uni-Flex™ Pac

Multi-Application strike with three faceplates for wood, aluminum and hollow metal frames



International Door Closers, Inc.

COPYRIGHT 2014 INTERNATIONAL DOOR CLOSERS, INC

West: 800-544-4422 • East: 800-225-6737

www.intldoorclosers.com

Uni-Flex 45 Series Electric Strike

How to Order

Models



- 45-4S** 4-7/8" x 1-1/4" square corner faceplate
- 45-4R** 4-7/8" x 1-1/4" radius corner faceplate
- 45-6R** 6-7/8" x 1-1/4" radius corner faceplate
- 45-7R** 7-15/16" x 1-7/16" radius corner faceplate
- 45-A** Included: One 4-7/8" square corner faceplate
One 4-7/8" radius corner faceplate
One 7-15/16" radius corner faceplate

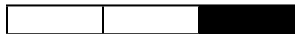
Latch Position Status Standard
Keeper Closed and Deadlocked/Unlocked Status Standard

Finish



- 630 Dull Stainless Steel (standard with 45-4S)
- 628 Dull Aluminum (standard with 45-4R, 45-6R and 45-7R)
- 335 Black Anodized
- 606 Dull Brass
- 613 Oil Rubbed Bronze

Options



- K** Keeper open/closed status
- RMB** Buzzer 12/24V AC/DC operation

Electrical Specifications

- Dual Voltage Coil:** 280/140mA @ 12/24V DC
170/85mA @ 12/24V AC
- Latch Position Status (std):** SPDT, Dry 3Amp @ 30V
- Keeper Closed & Locked Status (std):** SPDT, Dry 3Amp @ 30V
- Keeper Open/Closed Status (optional):** SPDT, Dry 3Amp @ 30V

Dimensions

- 45-4S / 45-4R:** 1-1/4" W x 4-7/8" H x 1-1/16" D
(31.8 W x 124 H x 30.2 D mm)
- 45-6R:** 1-1/4" W x 6-7/8" H x 1-1/16" D
(31.8 W x 175 H x 30.2 D mm)
- 45-7R:** 1-7/16" W x 7-15/16" H x 1-1/16" D
(36.5 W x 201.6 H x 30.2 D mm)

