



# HARDWIRE AND WIRELESS 4½" PUSH PLATES

## PBR45 SERIES



10PBR45 shown with optional surface mount box  
(All mounting options are sold separately)

The PBR45 series is a smaller solution to the standard 6 inch PBR series push plate. This 4½ inch design features the same functionality with a more aesthetically pleasing size.

## PREMIUM PUSH PLATES FOR KNOWING ACT APPLICATIONS

### PBR45 SERIES



10PBR45  
Push To Open  
Text Only



10PBR45LL  
Handicap  
Logo Only



10PBR451  
Push To Open  
Text and Logo

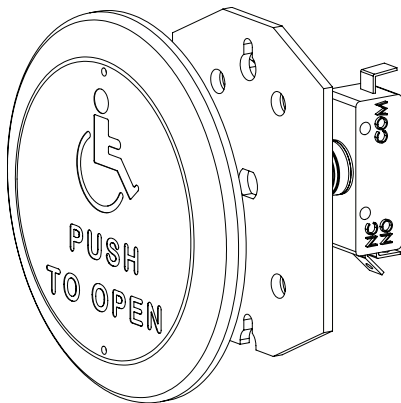


10PBR4510PTS  
Push To Slow  
Text and Logo



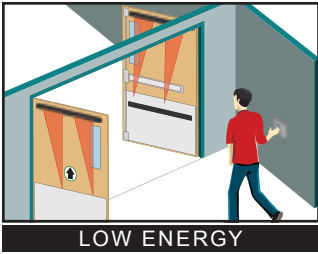
10PBR4510  
Plain Face  
No Graphic

### COMPONENTS VIEW



### FEATURES

- Smaller, refined design makes an ideal application for many knowing act applications
- Beveled edges are less susceptible to damage by deflecting harsh impacts from any side
- Stainless steel finish is scratch/scuff resistant and will not deteriorate or rust from exposure to liquids and other cleaning agents
- Graphics are etched onto the faceplate for maximum durability
- Available in various styles to fit almost any application, hard wired or wireless



APPLICATIONS

## BENEFITS

- Grade 304 stainless steel maximizes corrosion resistance and prevents rusting
- Stainless steel materials are 100% recyclable and environmentally friendly
- Options include hard wired and wireless mounting
- Compatible wireless frequencies include 433, 390 or 300 MHz

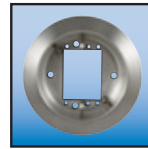
## MOUNTING ACCESSORIES



10BOX45RNDISM  
Surface Mount



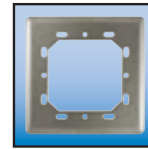
10BOX45RNDIFM  
Flush Mount



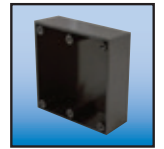
10ESCUTCHEON45  
Stainless Steel  
Surface Mount



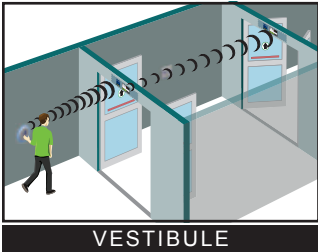
10WRRND45  
4.5 inch  
Weather Ring



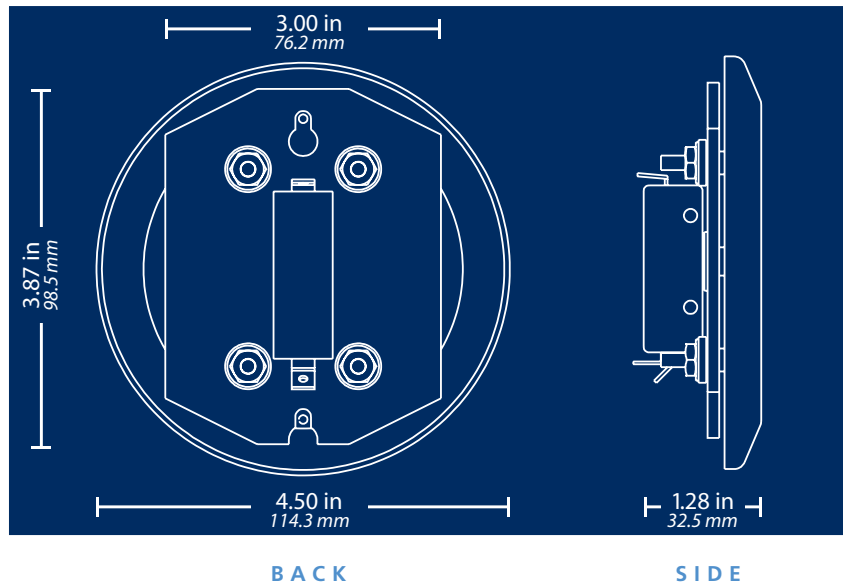
10BRINGC  
Universal  
Back Plate



10BOXDG4H  
4 x 4 inch  
Surface Mount



## DIMENSION DETAILS



## TECHNICAL SPECIFICATIONS

Materials	Faceplate: 16 gauge, 304 2B Stainless Steel
	Backplate: 1/8 inch thick, Aluminum
Cherry Switch	Mounting Screws: Stainless Steel, 6-32 x 1 in & 8-32 x 1 in
	Allen Head Size: 5/64
Compatible Wireless Frequencies	Single-pole, 15 A, COM/NO/NC
	433, 390 and 300 MHz

Specifications are subject to change without prior notice.

**DISCLAIMER** This document as well as all other enclosed documents (quotation / specification / other) are provided "as is" without warranties of any kind, either expressed or implied, including but not limited to the implied warranties of merchantability, fitness for a particular purpose, or non-infringement. / Information is supplied upon the condition that the persons receiving it will make their own determination as to its suitability for their purposes prior to use. In no event will IDC be responsible for damages of any nature whatsoever resulting from the use of or reliance upon information from this document or the products to which the information refers. / IDC has the right without liability to change descriptions and specifications at any time. / Prices, shipping and availability are subject to change without prior notice.

