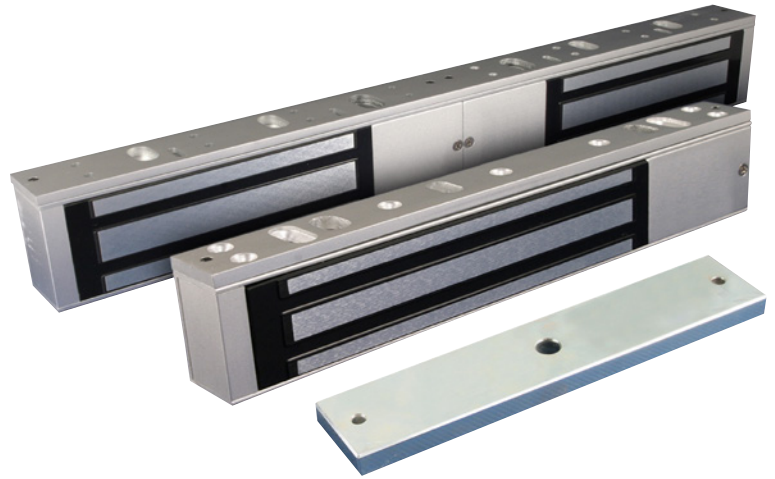




UL LISTED ELECTROMAGNETIC LOCKS
MAGLOCKS
 ULTIMATE PROTECTION

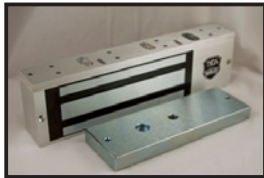
FEATURES

- Lock status sensor (bond sensor) and visual LED on 600 and 1200 lb models
- Includes adjustable relock time delay (0 – 90 secs)
- Field selectable 12/24V DC
- Installation hardware included for typical applications
- Convenient plug-in wire terminals
- Available for single doors and double doors without center mullion



**EASY INSTALLATION
 MULTIPLE MODELS**

IDC Maglocks offer the ultimate protection for most access control applications.



10MAGLOCK1UL
 1200LB – SINGLE



10MAGLOCK3UL
 600LB – SINGLE



10MAGLOCK5UL
 1200LB – DOUBLE



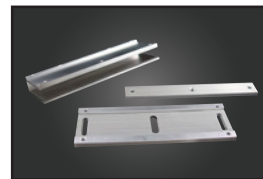
10MAGLOCK6UL
 600LB – DOUBLE



10LZBRMAG1UL
 (1) 'L' and (1) 'Z'



10LZBRMAG3UL
 (1) 'L' and (1) 'Z'



10UBRACKETUL
 U-Bracket – Glass Doors

use with
10MAGLOCK3UL



MAG5LZUL
MAG6LZUL
 (2) 'L' and (2) 'Z'



10FILLER12UL
10FILLER34UL
 FILLER BAR



Vertical Spacer Bars



Armature Housing


International Door Closers, Inc.


COPYRIGHT 2014 INTERNATIONAL DOOR CLOSERS, INC

West: 800-544-4422 • East: 800-225-6737

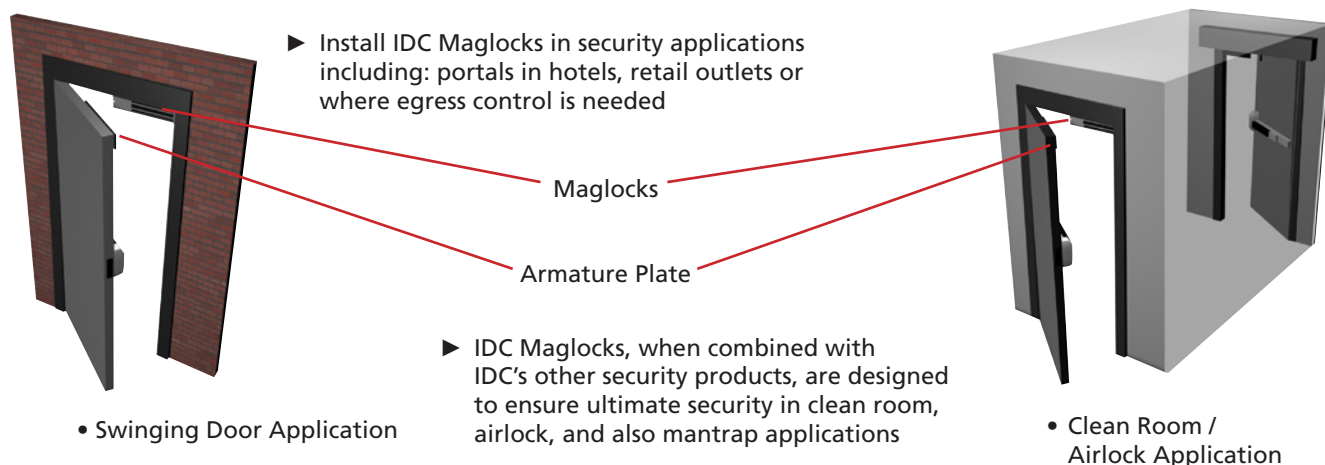
www.intldoorclosers.com

TECHNICAL SPECIFICATIONS

10MAGLOCK3UL Single 10MAGLOCK6UL Double	HOLDING FORCE 600 lbs	INPUT VOLTAGE 12 or 24V DC <i>Note: This product is recommended to be used with a UL-Listed Power Supply</i>	CURRENT DRAW Single 0.50A @ 12V DC 0.25A @ 24V DC Dual 1.00A @ 12 VDC 0.50A @ 24V DC	DIMENSIONS Single 9.84" × 1.85" × 1.02" (250mm × 47mm × 26mm) Dual 19.76" × 1.85" × 1.02" (502mm × 47mm × 26mm)	HOLD TIMER 0-90 sec
					

10MAGLOCK1UL Single 10MAGLOCK5UL Double	HOLDING FORCE 1200 lbs	INPUT VOLTAGE 12 or 24V DC <i>Note: This product is recommended to be used with a UL-Listed Power Supply</i>	CURRENT DRAW Single 0.50A @ 12V DC 0.25A @ 24V DC Dual 1.03A @ 12V DC 0.52A @ 24V DC	DIMENSIONS Single 10.47" × 2.91" × 1.58" (266mm × 74mm × 40mm) Dual 20.94" × 2.91" × 1.58" (532mm × 74mm × 40mm)	HOLD TIMER 0-90 sec
					

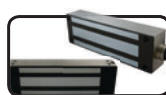
MAGLOCK APPLICATIONS



RELATED PRODUCTS



R2E-100
UL / ULC Listed, Active Infrared, Request To Exit Detector designed for access control applications



Weather Resistant Maglocks
Increased protection on more heavy duty doors and gates



Cylindrical Strikes
UL / ULC Listed, low profile, all-in-one, universal electric strike



Rim/Exit Strikes
UL / ULC Listed, surface mount electric strike